



*“STYLISH ACCESSORIZING FOR THE  
MODERN WOMAN”*



*555 OEMLER LOOP  
SAVANNAH, GA 31410*

*P: 212-695-2447 | F: 912-503-9214*

*E: [Info@andrewhamiltoncrawford.com](mailto:Info@andrewhamiltoncrawford.com)*



# // WANDERLUST COLLECTION //

#S224 | \$109  
36 inches



#S225 | \$52



#S049 | \$59



#S054 | \$39

#S305 | \$149



#S304 | \$129



#S052 | \$33

#S303 | \$119



#S053 | \$39

# // WANDERLUST COLLECTION //



#S227ss | \$39



#S226ss | \$45



#S228ss | \$39



#S050 | \$49



#S311 | \$39



#S229 | \$149  
Silver/Gold



#S230 | \$69  
Black, White, Clear



#S306 | \$49



#S308 | \$42



#S307 | \$52



#S309 | \$99  
Also available in White



#S051 | \$39





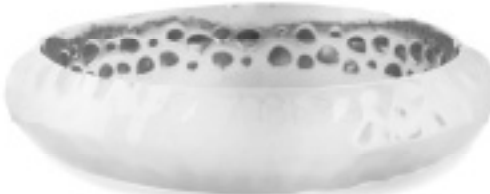
# // WANDERLUST COLLECTION //



#S194 | \$59



#S195 | \$75



#S193 | \$54



#S196 | \$99



#S197 | \$59



Also available in white.



#S222 | \$52



#S219 | \$49

#S217 | \$65



#S045 | \$49

#S046 | \$49



#S218 | \$65



#S300 | \$129

Also available in silver.

#S301 | \$119  
Also available in silver.







#S192 | \$62  
Silver/Gold  
Black, Clear, Amber  
*NEW MATTE FINISH*



#S168 | \$33

#S167 | \$33

#S166 | \$49  
Silver, Gold, Black Rhodium



#S159 | \$125 —  
Gold, Silver, Black Rhodium



#S019 | \$39  
Silver, Gold,  
Black Rhodium

#S189 | \$49



Fits standard wrist size

#S190 | \$49



#S188 | \$59



Convertible to 7"-8" wrist.



// *SLIDE TENNIS BRACELETS* //

Available in Silver, Gold, and Black Rhodium



#S147 | \$69

{TRENDING!} #S187 | \$59



#S047 | \$42



Silver/Gold  
Black, Clear, Amber  
*NEW MATTE FINISH*



#S048 | \$49

#S191 | \$55  
Silver/Gold



#S199 | \$60  
Silver/Gold  
Black, Clear,  
Amber



*NEW MATTE FINISH*



#287 | \$49  
Black, Mother of Pearl,  
Turquoise- Silver/Gold



#049 | \$59



#239 | \$59

5





#S179 | \$39



#S180 | \$42



#S178 | \$29



#S175 | \$29



#S174 | \$29



#S176 | \$29



#S173 | \$29



#S177 | \$36



#S208 | \$42



#S171 | \$54

{TRENDING!}



#S039  
\$14 each.  
Pre/Pack  
of 2



#S214 | \$35



#S209 | \$89  
Silver or Gold



#S015 | \$35  
Silver or Gold



#S172 | \$29  
Amber, Clear, Black

Highwire  
Bracelets are  
available in  
Black, White,  
& Mint.



#S170 | \$69  
Silver or Gold



#S211 | \$36



#S032 | \$35



#S210 | \$39  
Black, White



// MODERN LUXURY //

AVAILABLE IN SILVER AND GOLD  
\* ITEMS AVAILABLE IN BLACK RHODIUM.



#S165 | \$119  
Silver/Gold



#S215 | \$49  
Silver/Gold





Slim, Sleek, & Chic...  
Say hello to her new everyday day essentials!

{TRENDING!}  
// MODERN LUXURY //

Cuffs are adjustable.  
Available in gold, black rhodium, or rhodium plating.



#S183 | \$36  
Gold, Black Rhodium, Silver



#S184 | \$39  
Silver, Gold, Black Rhodium,  
Black or White Resin



#S182 | \$33  
Silver, Gold, Black Rhodium,  
Black or White Resin



#S185 | \$40  
Silver, Gold, Black Rhodium,  
Black or White Resin



# CHIC & SOPHISTICATED //



#S136 | \$79 | Silver/Gold  
Colors: Clear, Sapphire, Black, Mint, White, Amber



#S006 | \$35 | Silver/Gold  
Colors: White, black, clear, sapphire, mint, amber.



#S201 | \$52  
Silver/Gold  
Black, clear, white, sapphire.



#S030 | \$39 | Silver/Gold  
Colors: Black, White, Mint, Clear

{TRENDING!}



#S114 | \$99 | Silver/Gold  
Black, white, clear.



#S169 | \$49 | Silver/Gold  
Colors: Black, White, Mint, Clear



#S160 | \$39

#S162 | \$54

#S161 | \$39

#S163 | \$65

Silver/Gold/Black Rhodium.

#S162, #S160, & #S161 are available in Black, White, Mint.



#S009 | \$32 | Silver/Gold

Also in red, white, clear, turq, platinum, & tangerine.



#S186 | \$59 | Silver/Gold



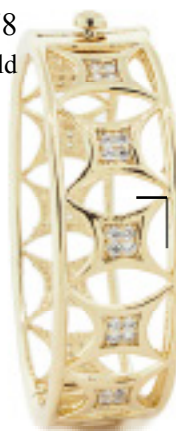
#S138 | \$85 | Silver/Gold  
Colors: Sapphire, Black, Amber.

#S014 | \$39 | Silver/Gold



#S033 | \$38  
Silver/Gold

#S153 | \$78  
Silver/Gold



#S137 | \$62 | Silver/Gold  
Colors: Amber, clear, black, sapphire.

ALL THE RIGHT ANGLES //



#S149 | \$39  
Silver/Gold



#S145 | \$33 | Silver/Gold  
Also available in mint, coral, turquoise



#S146 | \$33 | Silver/Gold  
Also available in black, clear, red, mint



#S012 | \$45  
Silver/Gold



#438 | \$35  
Silver/Gold



#S017 | \$25  
Silver/Gold



#A7 | \$34  
Silver/Gold



#S010 | \$22.50  
Coral, platinum, grass,  
amber, sapphire, black,  
clear, red, turq, pink,  
white, mint.



#4404 | \$28  
Silver/Gold  
Clear, Amber



#S018 | \$35 | Silver/Gold  
Also in sapphire and mint

#X4 | \$28  
Also in white.



#S152 | \$69.50  
Silver/Gold





# LIVE COLORFULLY //



#S013 | \$36 | Silver/ Gold  
Colors: Amber, White, Red, Coral, Mint

#S139 | \$49

Silver, Gold, Black Rhodium



#X38 | \$25 | Silver/Gold

#X37 | \$25 | Silver/Gold



#S108 | \$59 | Silver/Gold

Colors: Purple, platinum, cranberry, honey, turq, peach, bronze, clear, black, amber, grass, pink, mint, red, white, london blue.



#S005 | \$36  
Silver/Gold  
Same colors as #S108  
(below).



{ TRENDING! }

#S020 | \$33  
Silver/Gold



#S016 | \$35 Silver/Gold

Colors: White, Mint, Clear, Coral, Sapphire, Black, Red, Turquoise, Peach



#S011 | \$22 | Silver/Gold  
Colors: Turquoise, Clear, Red, Clear



#S127 | \$35 | Silver/Gold

Colors: Turquoise, Clear, Red, Clear

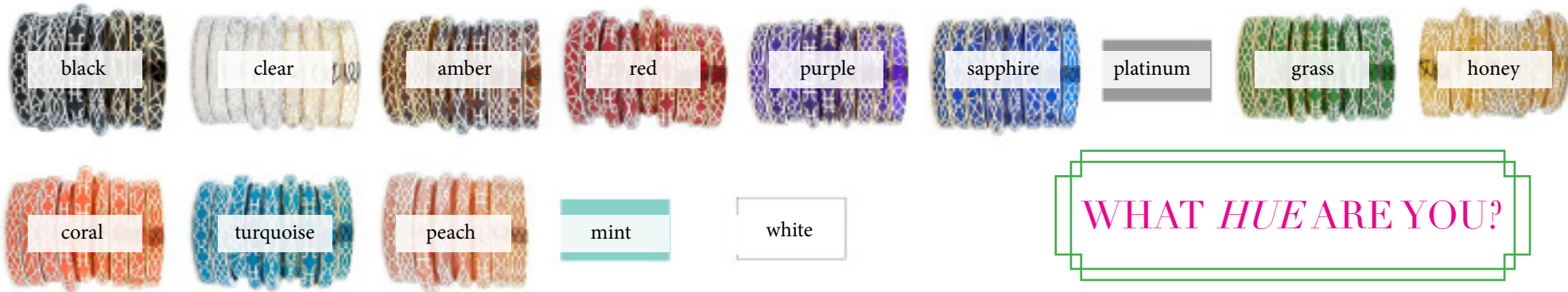
#S003 | \$20  
Silver/Gold



#S002 | \$20  
Silver/Gold







WHAT *HUE* ARE YOU?

{ *TRENDING!* }

Matching earrings on page 8: #S016



#S140  
\$50 | All colors pictured



#S133  
\$49- Silver/Gold



#S130  
\$39- Silver/Gold

{ *TRENDING!* }



#S131  
\$49- Silver/Gold



#S132  
\$42- Silver/Gold



#S129  
\$39- Silver/Gold

#S123 | \$49 | Silver/Gold Also available in white and mint.

\*HOT SELLER! #S151 | \$55 | Silver/Gold All colors pictured



{ *TRENDING!* }

SHOP BY  
*COLOR*  
OR BY  
*STYLE!*





## // THE SCROLL COLLECTION //

While designing this collection, inspiration stemmed from intricate patterns in historic iron gates from all over the world. Chad saw a true beauty in the delicate craftsmanship of iron architecture and desired to incorporate this same beauty into a timeless design that could be worn for years to come.



#S105 | \$49 Scroll Bracelet



#F03 | \$24- Ballgown Earrings



#1101 | \$24 | Silver/Gold

\*Also available in emerald and tangerine.

**STYLE TIP!**  
#1101 stacks  
perfectly with #S105!



# THE ROMANTICS //



#S150 | \$49  
Silver/Gold  
Coral, Turquoise, White, Red, Black.



#X36 | \$8  
Silver/Gold



#X35 | \$8  
Silver/Gold



#X11 | \$15  
Silver/Gold



#C14 | \$28  
Also available in honey.



#S154 | \$149  
Silver/Gold- Black, White, Mint.



#S134 | \$69 | Silver/Gold  
Black, White, Mint, Red



#S125 | \$94 | Silver/Gold  
Colors: Coral, Red, Turquoise, White, Black



#S206 | \$39



#S008 | \$29  
Silver/Gold

#S007 | \$36  
Silver/Gold



Color chart for #S008,  
#S007, & #S125.





SENTIMENTAL VALUE //



#S128 | \$84 | Silver/Gold  
Mother of Pearl



#S135 | \$65 | Silver/Gold  
Black



#S117 | \$82



#S70 | \$99



#S118 | \$129 | Silver/Gold  
Colors: Black, White, Clear.



#S115 | \$49 | Silver/Gold  
Colors: Black, white, clear,  
turquoise.



#S113 | \$79 | Silver/Gold

#S112 | \$39 | Silver/Gold



#S111 | \$39 | Silver/Gold



#2211 | \$40



#00106  
\$36



#HON001 | \$60



#X34 | \$34 | Silver/Gold



#416 | \$34  
Silver/Gold



#Srs01 | \$21  
Silver/Gold



#X31 | \$18  
Silver/Gold



#A16 | \$22







#S107 | \$49 | Silver/Gold



#S204 | \$49 | Silver/Gold  
Colors: Black, White, Clear

#S116 | \$39 | Silver/Gold  
Colors: Clear, black, white



#000 | \$49



#X30 | \$25  
Silver/Gold



#X33 | \$29  
Silver/Gold

A true old-fashioned keepsake, this bracelet creates a modern way to wear your most precious memories.

#413 | \$39  
Black, White- Gold

#259 | \$48  
Black, White- Gold



#92 | \$65  
Black, White- Gold



#S124 | \$99  
Silver/Gold



#126 | \$99  
Silver/Gold

#125 | \$82  
Black, White- Gold







#S004 | \$21 | Silver/Gold

#X55 | \$25



#S202 | \$21 | Silver/Gold

# *LIVE & LOVE //*

#X8 | \$15



#X10  
\$25



#X9 | \$21



#X2 | \$12



#S203 | \$22



#X12 | \$25



#X1 | \$19  
Also in  
white w/  
turq stone.



#X6 | \$19  
Also in white.



#X7 | \$21



#F02 | \$29  
Silver/Gold



#F01 | \$29  
Silver/Gold





## BIOGRAPHY

“It’s the little details in everyday life that have led to the charismatic collection of Andrew Hamilton Crawford” says Southern-born New York designer, Chad Crawford. Jewelry has always been a strong part of Crawford’s life, starting with his family’s chain of fine jewelry stores to his experience in diamond acquisition at Tiffany’s. His ever-loving passion and lifelong relationship with jewelry led to the creation of a fine fashion jewelry line that has been successfully thriving for over 6 years. He takes the influences of his Southern heritage and life as a New Yorker to craft a collection that enhances classic sophistication with a contemporary essence. Each piece is not only a piece of jewelry, but a timeless work of art that is known to be worn by all generations. Known for its top-knotch quality and vivid array of color, Andrew Hamilton Crawford has gained both national and international attention for the creation of a unique and inventive line of resin jewelry.

The collection has been worn by Oprah Winfrey, Deborah Harry, Beyonce Knowles, Paula Abdul, Fergie, Serena Williams, and Christian Louboutin to name a few. Andrew Hamilton Crawford has been spotted on the Oprah Winfrey Show, Rachel Ray, The View, and Hemlock Grove. The line has been featured in publications such as The Modern Bride, Lucky, Elle Accessories, Real Simple, WWD, Town and Country, and The Accessories Magazine.

## TOP SELLING POINTS

- Hand polished resin enamel in beautiful, vibrant colors
- Rhodium-plated
- 18k gold plated
- Durable finish
- Hypo-allergenic
- Spring hinge with magnetic closures for easy wear
- Inspirational designs, each with their own unique story
- Select styles available in up to 20 colors, choose for any season or collegiate team
- In-stock inventory for fast turn-around
- Collectible styles that will continue to layer
- Timeless collections built for all generations

